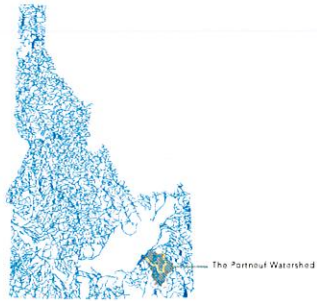


A VISION FOR THE PORTNEUF

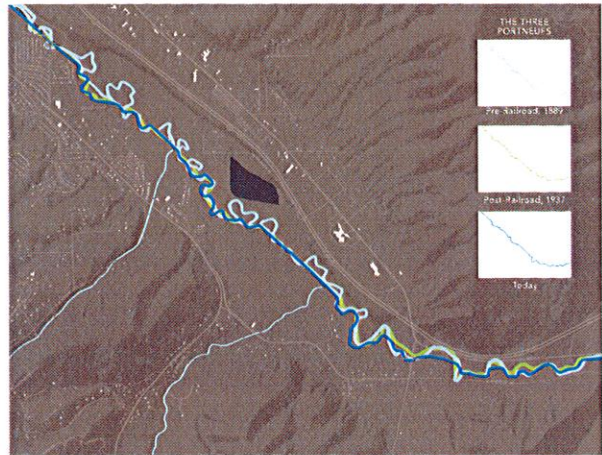
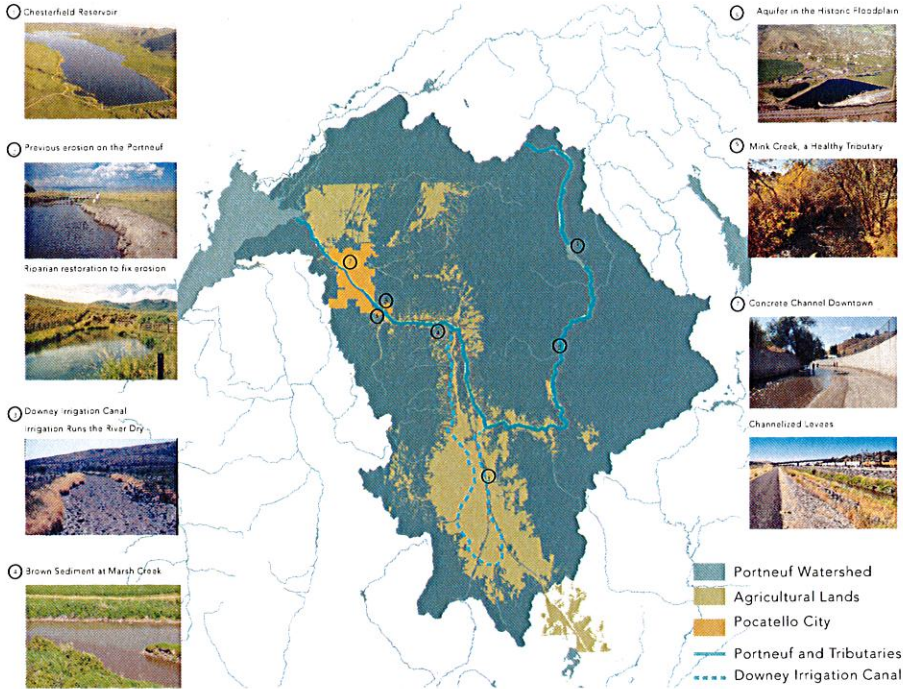
The Portneuf River is currently not in any state for recreation and is in need of some cleansing. The Portneuf suffers from pollution, has been straightened to better suite the railroad, and been made out to be a burden rather than an asset to the city. The vision study along with our design intervention, is to restore the river thereby revitalizing the landscape, and energizing the community with recreational and economic opportunities. Restorative processes such as creating sediment pools, bioengineered banks, and allowing the river to flow back in its old abandoned meanders, will give the Portneuf a second chance at life. The South Corridor should be a restorative recreational destination where people can enjoy the nature that surrounds Pocatello. By restoring the river and creating a greenway connecting to downtown Pocatello, people can more easily access the South Corridor, which will provide a place of sanctuary from the city life.



THE HEADWATERS OF THE COLUMBIA RIVER BASIN

- The Portneuf River is located in Bannock county Idaho, and is part of the larger Columbia River Basin Watershed.
- The Portneuf begins above Chesterfield Reservoir and ends at American Falls Reservoir, where it joins with the Snake River.
- The basin culminates at the Columbia River in Oregon, where it empties into the Pacific Ocean

THE JOURNEY OF THE PORTNEUF RIVER



THE FLUCTUATING RIVER

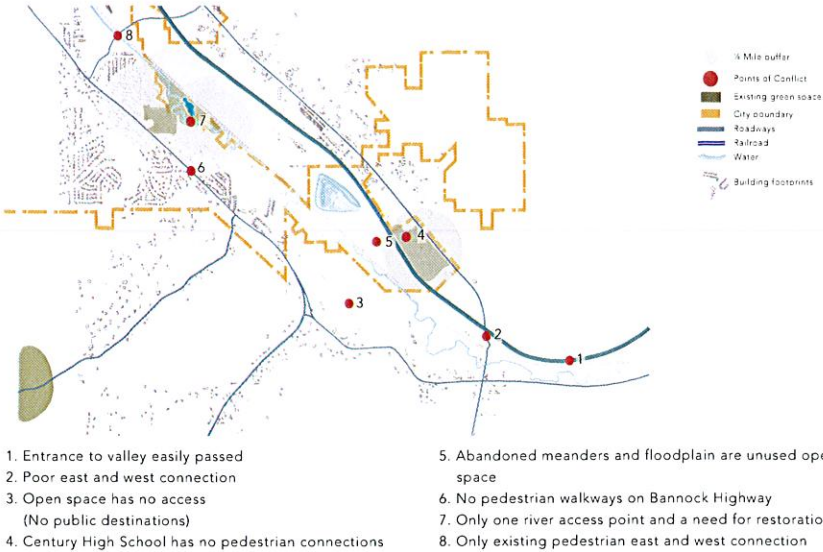
The Portneuf River has changed throughout time to meet the needs of people in the Pocatello area.

With the arrival of the railroad, the river's meandering nature was straightened over time. The floodplain was divided, reducing overflow areas during times of high waters.

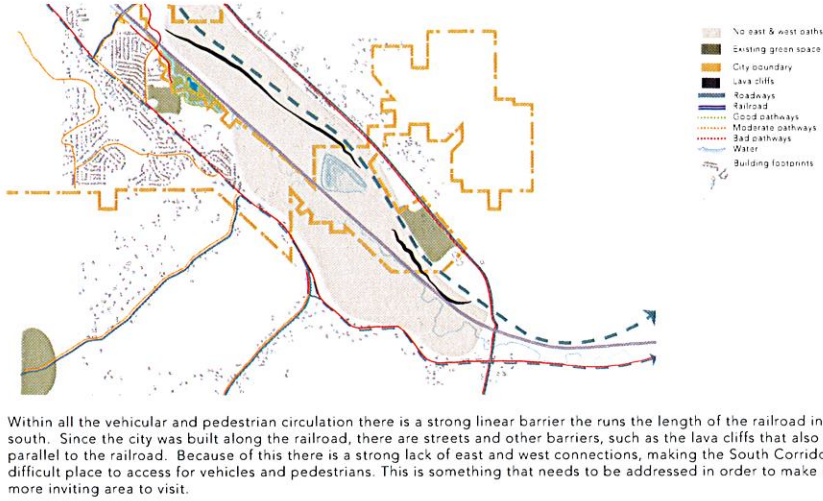
The now abandoned oxbows once created seasonal wetlands in the river valley. These wetlands provided critical habitat, as well as slowed the flow of the river to prevent flooding.

Restoring seasonal flows to some of the historic oxbows would revitalize the ecosystem, and help prevent flooding further downstream in the urban center of Pocatello.

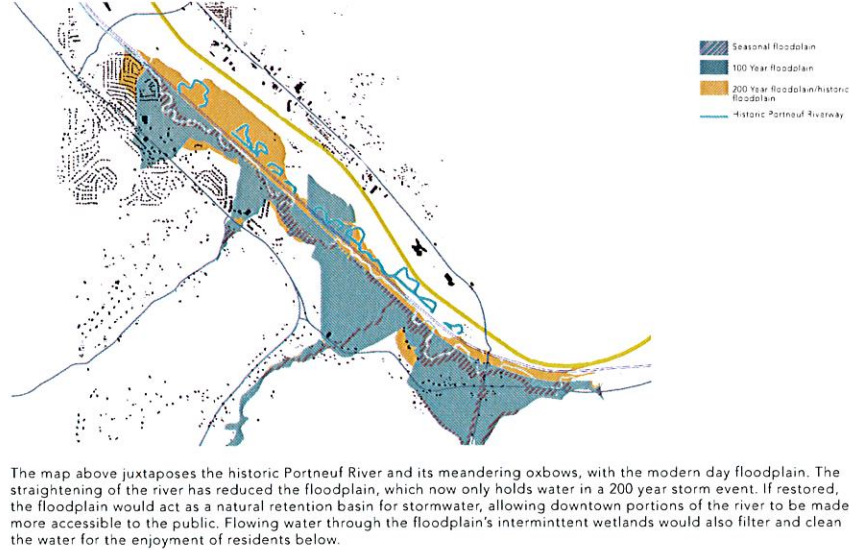
PROBLEM AREAS



DISCONNECT



FLOODPLAIN IN THE SOUTH REACH



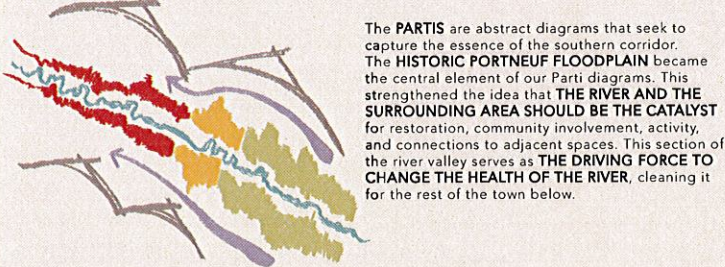
PRIMARY DESIGN PRINCIPLES

- RESTORATION** moves the Portneuf River Valley toward its natural state with a clean river, a functioning floodplain wetland, and habitat for wildlife. The floodplain will act as the central catalyst that links these spaces and ideas.
- The Portneuf River Valley has opportunities for public access, as well as activity centers that draw people into the area creating a scenic **DESTINATION** for Pocatello City.
- The Portneuf River Valley is utilized a point of **ACCESS**, connecting the east and west sides of south Pocatello as well as the south corridor to downtown. Access to the river will also be a central element of the design.

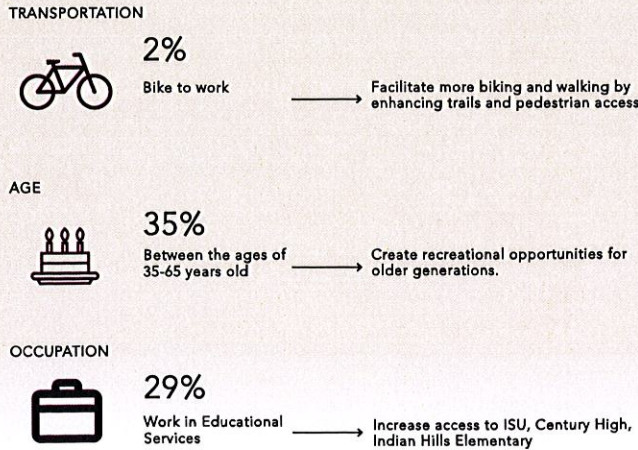
SECONDARY DESIGN PRINCIPLES

- The **ENTRANCE** to the gateway city is celebrated by creating signage and spaces to take in the Portneuf Gap and the Portneuf River Valley.
- The implementation will involve **COLLABORATION** within the community. Informative art along the river will engage local artists and residents, and raise awareness of the Portneuf. Community events will generate energy and fundraising, to drive future phases of projects along the river.

THE DRIVING FORCE FOR CHANGE



PEOPLE OF THE SOUTH POCATELLO CORRIDOR



RESTORING THE SOUTH CORRIDOR





# 1 PHASE ONE: RIVER RESTORATION

The main attraction to the South Corridor is the Portneuf River. Because it is currently not healthy, the first phase in revitalizing the South is to clean the river and get it to a point where recreation and access are possible. Implementation of Infiltration Pond, restored oxbows, and other means of restoration will help with this vision.

# 2 PHASE TWO: BUILD GREENWAY & ART WALK

Once the river is up and running, the greenway can then be pieced together to be a cohesive amenity. This greenway will allow for pedestrian access from the east and west as well as art works placed throughout. This means access to the high school and the abandoned meanders as well as community involvement through the art installed. River access points will also be implemented to improve on way-finding. The art walk adds a sense of place and connection through the whole greenway.

# 3 PHASE THREE: CHURCH FARM

The Church Farm is a wide open space that has potential to be capitalized on. With the growth of Pocatello the need for housing becomes greater, along with amenities for the South Corridor. In the new Church Farm a community and a commercial node will be provided, surrounded by demonstration agriculture and open space.

Mary Oliver  
Paco Patch  
Sara Shink  
Antra Sinha  
Rhett Taylor

Utah State University

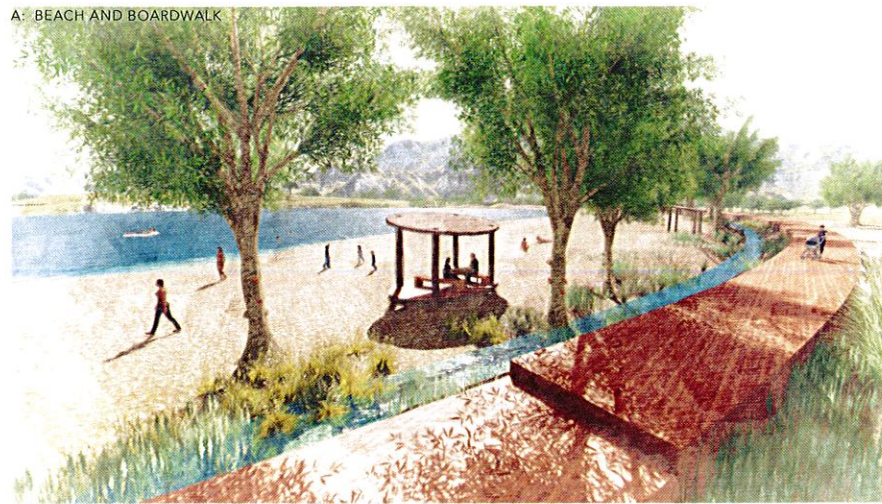
Department of Landscape Architecture and Environmental Planning  
Professor Caroline Jacobs  
Matt Stanley, T.A. Fall 2017

South Reach

# RIVER RESTORATION



A: BEACH AND BOARDWALK



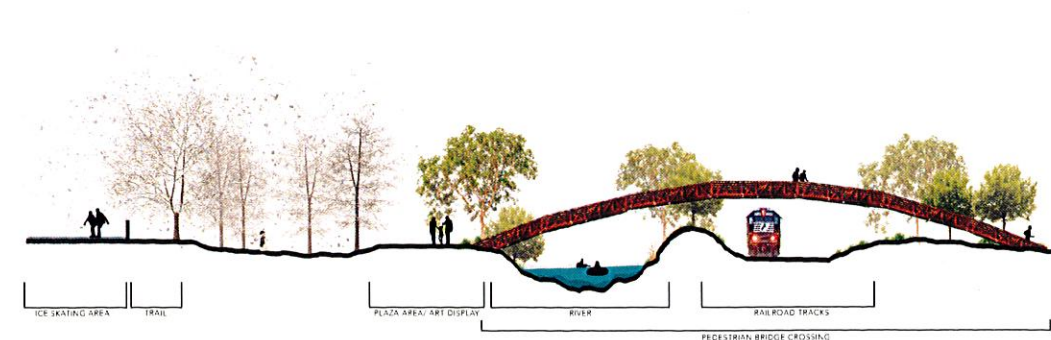
B: EVENING DOCK RECREATION



C: RIVER ACCESS



SECTION B: MULTI-SEASONAL RECREATIONAL USE



## THE VISION FOR CHURCH FARM

Currently the Farm is an underutilized space. In programming the site to be a destination we have proposed:

- To create a center for an eco-housing community with three types of home typologies
- Commercial space for the people living in the South Corridor

A space for educational agriculture

Community access to the river and link to the greenway.

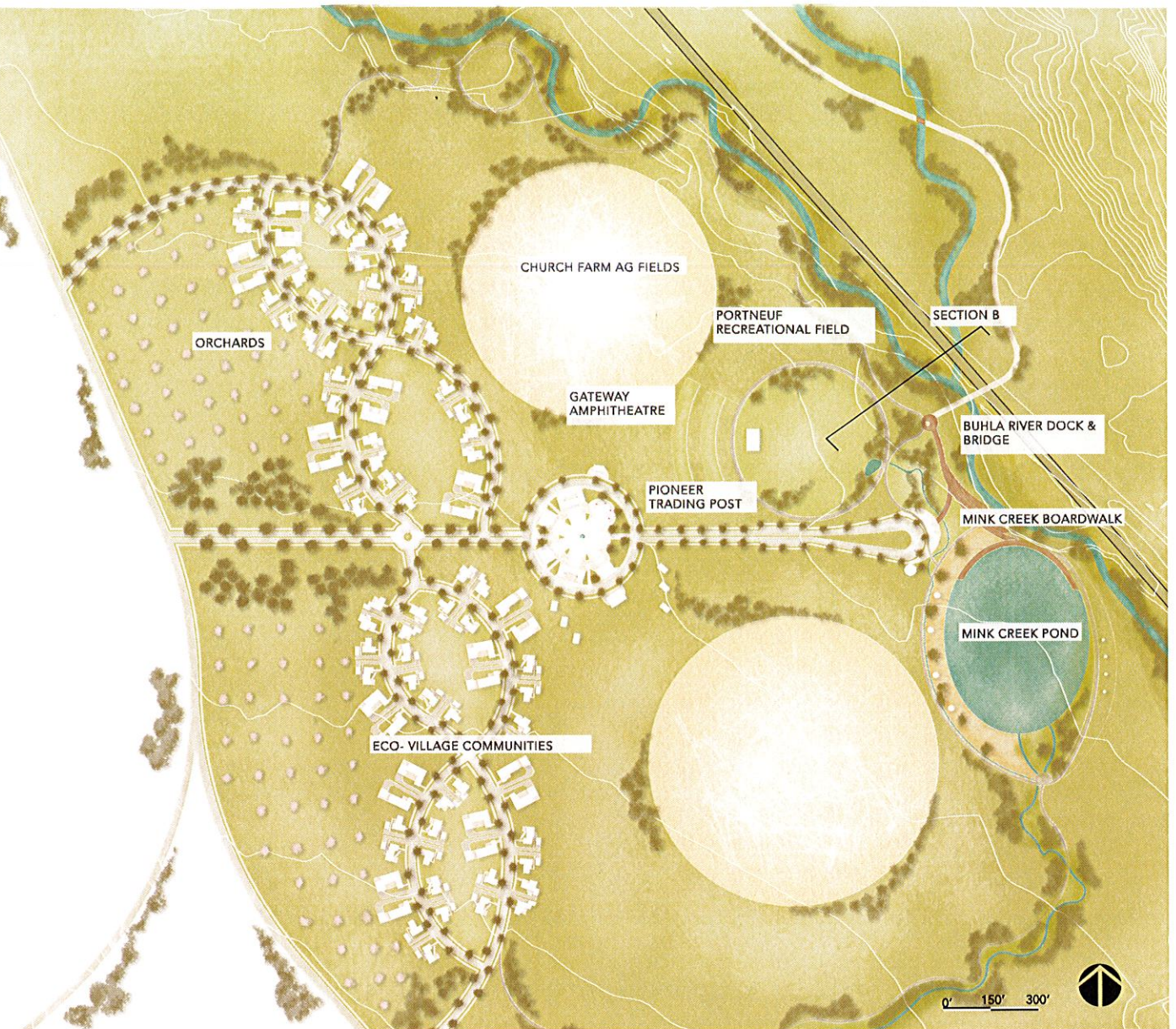
A seasonal large turf field that doubles as a ice skating rink in winter months

The church farm will keep its initial purpose as an agricultural land while being revamped to highlight other activities, giving the South Corridor a sense of place.

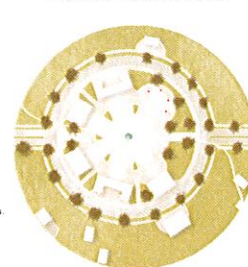
Mink Creek will feed into a man made lake that will provide interest for activities within Church Farm for the summer months.

The dock in the evening with seats allow for viewing and passive recreation

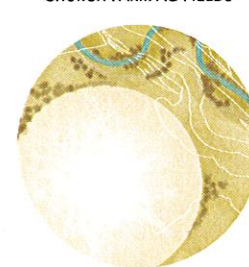
The dock provides river access for not only swimming but many other recreational options.



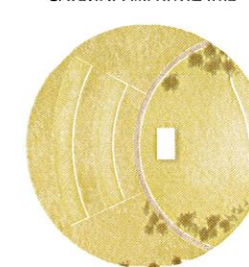
PIONEER TRADING POST



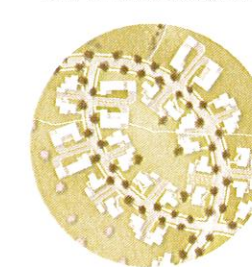
CHURCH FARM AG FIELDS



GATEWAY AMPHITHEATRE



ECO- VILLAGE COMMUNITIES



BUHLA RIVER DOCK & BRIDGE



Central plaza space provides an opportunity for small commercial businesses and a central gathering place for the community. The commercial areas allow the open space to continue as it helps pay for maintenance and upkeep of the areas that are free and open to the public. Gathering space can be used as a space for markets, art displays, or community gatherings with parking provided.

The preservation of agricultural land is keeping with the heritage and history of the area. Preserving the land provides opportunities for education, community farming and involvement, and recreational activities such as a corn maze. It is important to allow the community to get involved in something as important and unifying as taking care of a garden together and learning how important agriculture is.

An outdoor amphitheater is in place to allow for the community to gather for shows, plays, and performances. Parking is provided for such occasions. The amphitheater helps the South Corridor become a destination for Pocatello residents by bringing life and art to the city.

Eco-Village Communities are based on the principle that they are sustainable and eco-friendly. Built in such a way as to provide mixed housing options for mixed users while finding ways to reduce their carbon footprint. This housing development helps to sustain the green space surrounding it so that it can stay as green space instead of being developed further.

Providing river access is an important function of the area surrounding Mink Creek Pond. Boardwalk sections of trail are installed to provide a connection to the greenway while including ways to interact with the river. Tubing, kayaking and other river activities are encouraged and a place to enter the river safely is provided with a place further down river to take out as well.



# DESTINATION AND ACCESS

Mary Oliver  
Paco Patch  
Sara Shuk  
Antra Sinha  
Rhet Taylor

Utah State  
University

Department of Landscape Architecture  
and Environmental Planning  
Professor Caroline Laskie  
Matt Stanley, T.A. Fall 2017

South Reach



## ENRICHING THE COMMUNITY

### INTENT

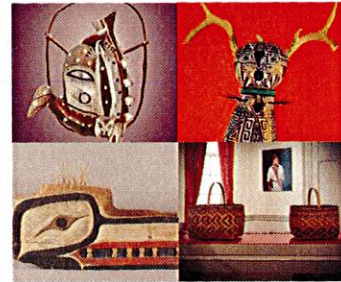
- Collaborate
- Teach about story and life of the River
- Explain the evolution of the City
- Unravel the history of the Railroad
- Illustrate way finding when on the river
- Teach education through experience of creating temporary art installation
- Art connecting along the green way trail

### CREATORS

- Students and teachers of High School
- Students and Faculty of ISU
- Native American artists living in the reservation
- Artists of the community
- Selected through competition

#### SACAJAWEA PARK

- in the lobby at Entrance to the Sacajawea Park
- Resting places with benches that illustrate history



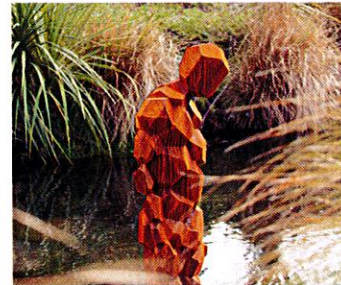
#### RAYMOND PARK

- One side of the concrete channel with mural paintings
- Art on stools alongside the river



#### EDSON FIGHTER

- At either end of the bridge proposed
- Along side the river



#### RODNEVILLE STREET

- Alongside the UP Station



- Walls of the pedestrian pathway
- Art work on the round about at either side of the tunnel



#### PROPOSED TERRY STREET BRIDGE

- Painting on the pavement of the bridge proposed
- Murals on Warehouse district walls
- Plaza

#### CENTENNIAL PARK

- Plaza and Centennial Park
- Along Portneuf river in the botanical garden



## INCORPORATING ART

Mary Oliver  
Paco Patch  
Sara Shirk  
Anita Sinha  
Rhett Taylor

Utah State  
University

Department of Landscape Architecture  
and Environmental Planning  
Professor Caroline Javie  
Matt Stanley, T.A. Fall 2017



South Reach